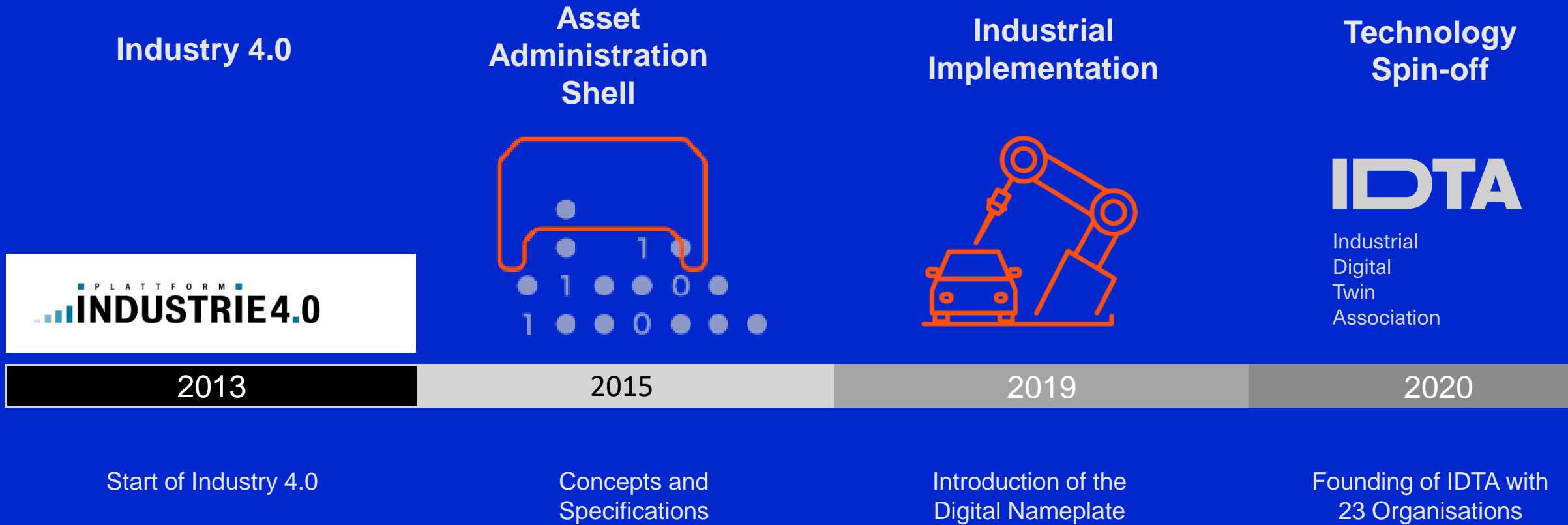


# IDTA

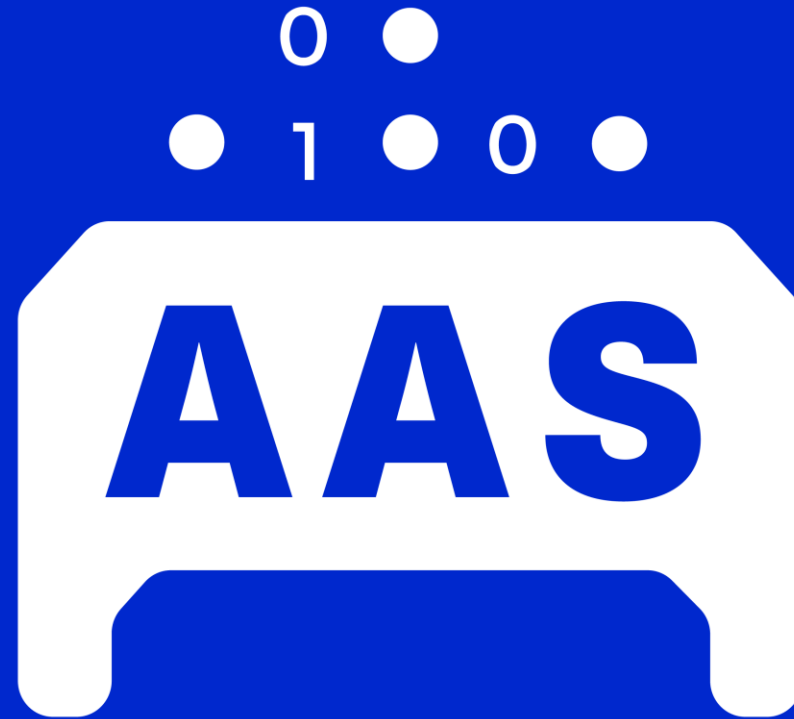
Industrial  
Digital  
Twin  
Association

**IDTA**

# Evolution of Industry 4.0



| | | | | | | | | | | | | | | |



STANDARDISING  
THE INDUSTRIAL DIGITAL TWIN

# Digital Twin for the entire Asset Life Cycle



## Our goal

- Efficient scaling
- Standardization
- Entire life cycle

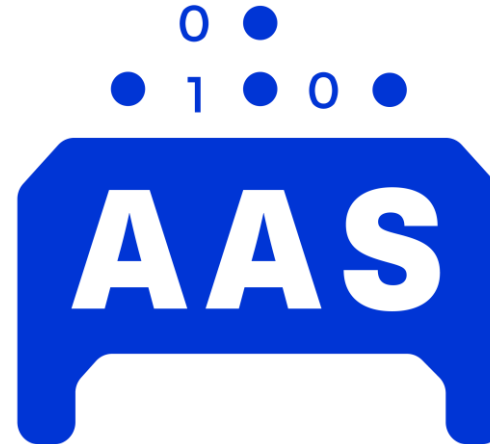
## Digital Twins today

- Application driven
- Specific & Efficient
- Only one Life Cycle Element



IEC 61406  
ID Link

+



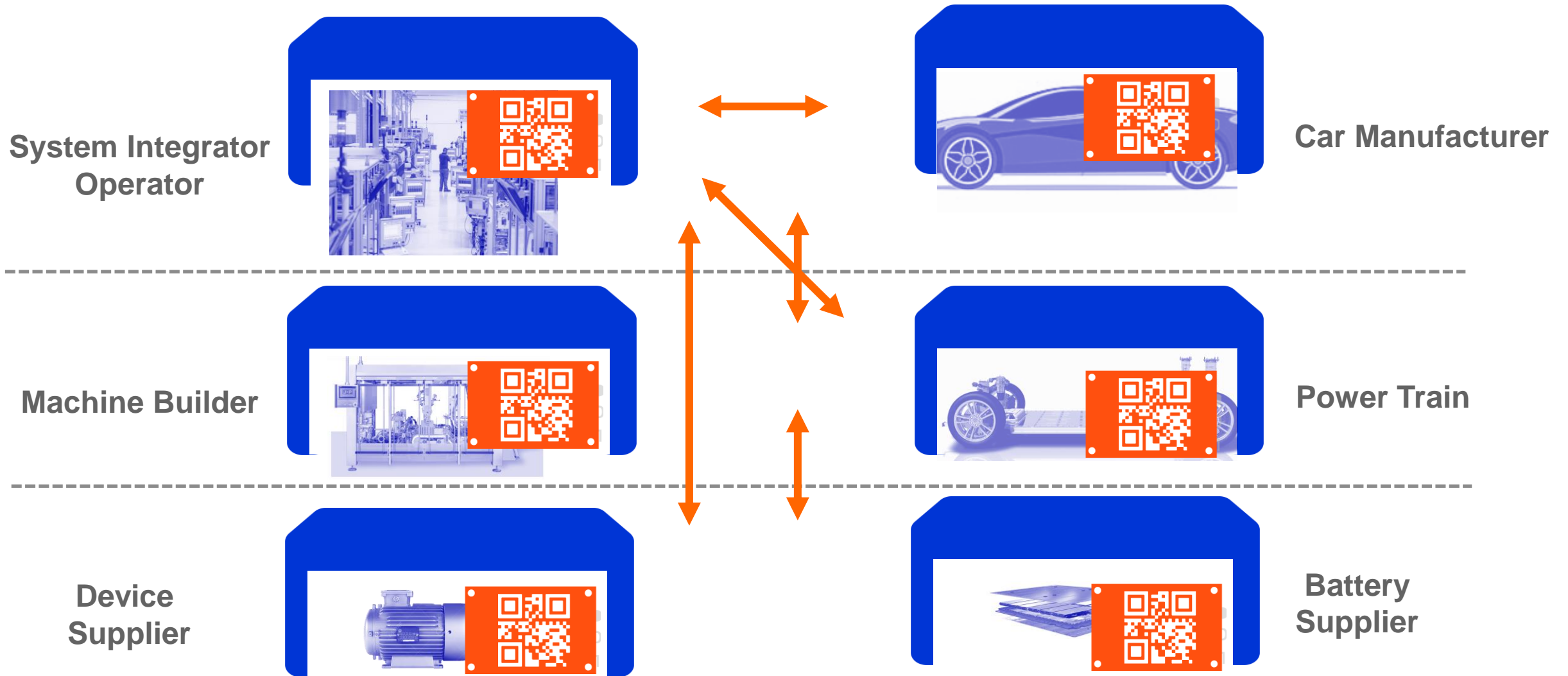
IEC 63278

=



1. Industry-ready tool for documenting and providing product information
2. Human- and machine-readable format.
3. Accessible for various parties such as companies, authorities and users.

# AAS for Integration of the value-adding partners



# MEMBERS: SUPPLIERS – USERS | OT – IT

**ABB**

**accenture**

**asentics**  
VARIO

**asentics**  
vision technology

**BCON<sup>2</sup>**  
BUSINESS  
CONTENT  
CONSULTING

**bill-X**  
Collect. Manage. Execute.

**bitkom**

**BOSCH**  
Technik fürs Leben

**Class.Ing**  
Ingenieur-Partnerschaft für Mediendaten-  
management Schrenschläch & Rukavina

**CLOUD  
item**

**codewerk**

**complement**  
the digital enablers

**CONTACT**  
Software

**D&TS**  
Dataseservices & IT-Solutions

**Danfoss**

**dunkermotoren**

**em** engineering  
methods AG

**Endress+Hauser** **E+H**  
People for Process Automation

**ePLAN**

**equinor**

**fabnamix**

**FESTO**

**FLUIDON**

**Fraunhofer**

**GEA**

**GFT**

**GRI**  
SIMULATIONS

**HARTING**

Pushing Performance  
Since 1945

**HEGLA**  
New  
Technology  
Innovations for Glass

**HEITEC**

**HITACHI**  
Inspire the Next

**HOMAG**

**HUAWEI**

**ifm**

**IndustryApps**  
Appstore for Industry 4.0

**inevo**

# MEMBERS: SUPPLIERS – USERS | OT – IT



INspares  
GmbH



INTERX

INTRANAV.



**ISTOS**  
A MEMBER OF **DMG MORI**

**KETI** Korea Electronics  
Technology Institute

**KION**  
GROUP

**KUKA**

**Lenze**

**LS ELECTRIC**

**M&M**



**MENNEKES**  
MY POWER CONNECTION

**Meta·Level**  
SOFTWARE AG

**MHP**  
A PORSCHE COMPANY

**Microsoft**



**MURR**  
ELEKTRONIK  
*stay connected*

**NEOCEPTION**  
Pepperl+Fuchs



**NetApp**

**NINEFEB**

objective partner

**OMRON**



**PEPPERL+FUCHS**

**PHENIX CONTACT**

**PLASTIC ENERGY**

**PROSTEP**  
integrate the future

**ptc**  
DIGITAL TRANSFORMS PHYSICAL

**rexroth**  
A Bosch Company

**RWTH AACHEN UNIVERSITY**

**SAP**

**SCHMALZ**

# MEMBERS: SUPPLIERS – USERS | OT – IT

Life Is On | **Schneider**  
Electric

**SCHUNK**

**SDU**

**SICK**  
Sensor Intelligence.

**SIEMENS**



**soffico**

**sommer**  
kennzeichnend.

**STAHL**

**Steinbeis**  
Europa Zentrum  
Enabling Innovators to Grow

**THREEDY**  
Instant  
3Dhub

**TNO**

TRANSACTION  
NETWORK **TN**

**TRUMPF**

**TU**  
WIEN  
TECHNISCHE  
UNIVERSITÄT  
WIEN

**TURCK**  
Your Choice. Automation Partner.

**TwinStore**

**UNIBERG**

**UNITED**  
GRINDING



**VDMA**



**WAGO**

**Wiferion**

**WITTENSTEIN**

**XITASO**

**ZF** GROUP

**zvei**  
electrifying  
ideas